

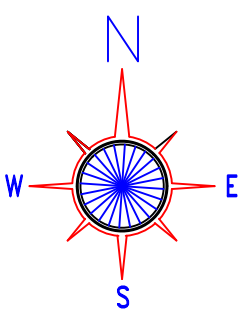
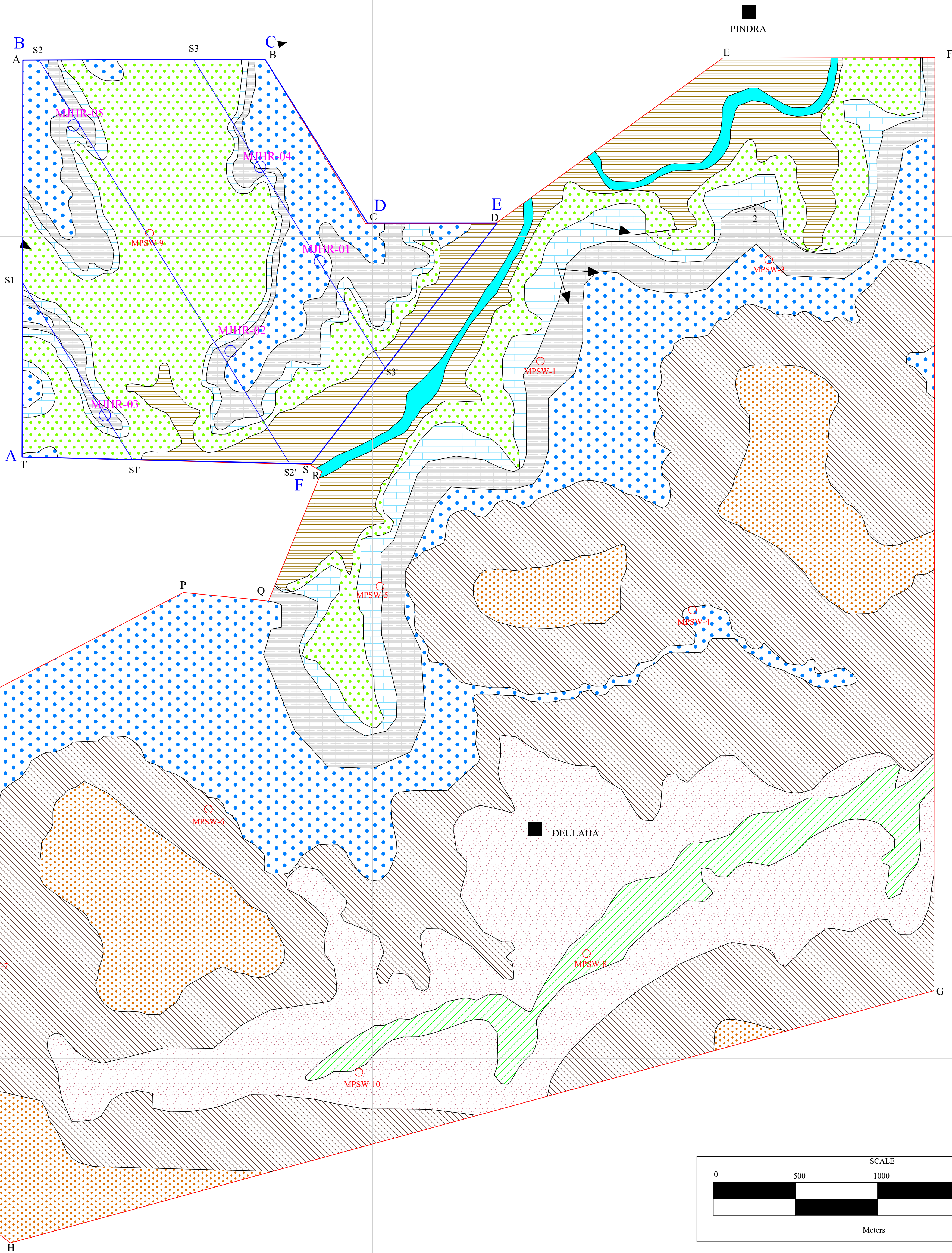
471500

476500

481500

2759000

2759000

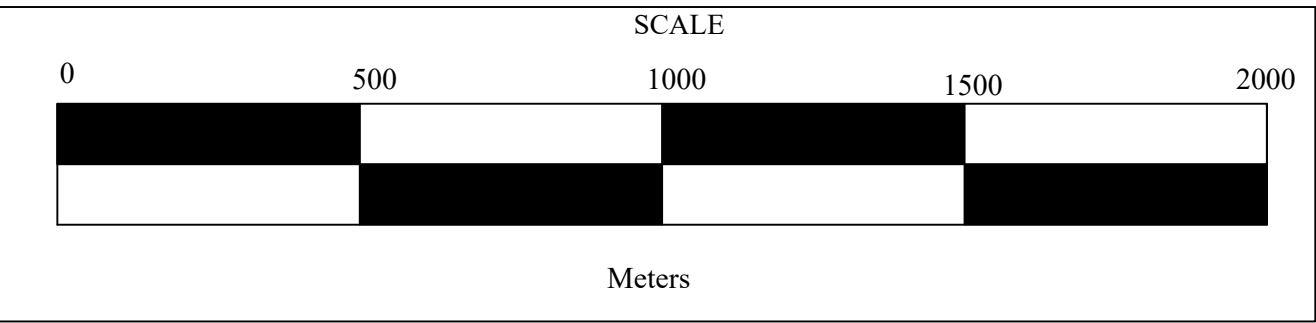


LEGEND

AGE	SUPERGROUP/ GROUP / COMPLEX	SERIES	FORMATION	LITHOLOGY
Recent to sub-recent				Alluvium/ soil/ laterite
Proterozoic	Vindhyan Super Group	Rewa	Gahadara sandstone	Quartz arenite
			Jhri Shale	Upper shale
				Green & Red shale
				Upper White sandstone
				medium grained quartz arenite
				Middle Glauconitic sandstone
				Lower White sandstone –
				medium grained quartz arenite
				Lower shale
				green and red shale with conglomerate
			Rohania sandstone	quartz arenite with granular conglomerate
		Itwa sandstone formation	Pindra Shale	green and red shale with limestone interband
			Bhulwa limestone	cream colour limestone with brown chert
			Banbha Sandstone	
		Panna Shale		Shale with limestone interband
		Kaimur	Baghain Sandstone	Medium to Coarse Sandstone, fine sandstone with siltstone and shale interbands. Medium to coarse sandstone, angular gravel bearing sandy conglomerate
				Unconformity

INDEX

- MPSW-7 BOREHOLE LOCATIONS IN PINDRA SOUTH WEST BLOCK
- DIP OF THE BEDDING PLANE
- ANTIFORMS, SYNFORMS
- PALEOCURRENT DIRECTION (ON THE BASIS OF CROSS BEDS)
- PINDRA PINDRA (SETTLEMENTS) VILLAGE
- MJHR-03 BOREHOLE DRILLED BY MECL IN JHARI BLOCK
- BLOCK BOUNDARY OF SOUTH WEST PINDRA BLOCK WITH POINTS
- BLOCK BOUNDARY OF JHARI BLOCK WITH CARDINAL POINTS
- SECTION LINE JHARI BLOCK
- BADHA NALA



MINERAL EXPLORATION AND CONSULTANCY LIMITED (Formerly Mineral Exploration Corporation Limited)		
GEOLOGICAL MAP Source GSI: 1984-85, CR-019273		
PINDRA SW EXTENSION BLOCK SHOWING JHARI BLOCK,(39.23 sq km) SATNA-DISTRICT, MADHYA PRADESH. RF. 1:12,500		
PROCESSED AT : NON COAL GR CELL MECL, NAGPUR.	Prepared by : Peeyush Kumar, A. M. (Geology) Checked by : Naveen Pala, Sr.Manager (Geology) Approved by : Shrikant Sharma, HoD (Exploration)	
MECL/EXPL/NOV-2025	PLATE NO.- V	05

471500

476500

481500

2754000